

## FROM THE CHAIR

“How many ways can I say that I love you,” goes an old song. Let’s change that to how many ways can one say Thank You for your response to our fund raising effort in support of our forthcoming Woody Herman Orchestra concert on January 25.

A bit of background: When Frank Tiberi, director of the current Woody Herman organization, first approached PAJA through Marilyn Wong relative to putting on a celebration concert in honor of Herb Wong, we were strongly attracted to the idea but uncertain if we could swing it financially. The Board concluded that this was an opportunity not to be missed.

We, however, did not want the unusual costs involved in such a large undertaking to deflate our resources to the point where we would not be able to conduct our normal activities. Consequently, with some trepidation, we embarked on our first formal fundraising effort. In the past, we’ve relied on unsolicited gifts, but we felt we had to make a special plea to the membership in this case. Your response has been most rewarding, and as a result we are able to proceed with the eagerly-awaited WHO event and still support our usual jazz education programs. See Buff editor Ed Fox’s fuller description of the concert following this column, indicating where to get tickets, etc. It’s going to be a humdinger of an evening.

It is important to note that the Palo Alto Adult School which has long been a sponsor of our gigs will continue to do so. We are grateful to Kara Rosenberg, the former PAAS head for her longtime support and cooperation and look forward to a good working relationship with the new principal, Katya Villalobos.

As we enter our 23<sup>rd</sup> year of operation, the *downbeat* will be different, but you can be assured that I, and your Board, are very *upbeat* about the year ahead.

In continued appreciation,

C. Stuart Brewster  
Chair, Palo Alto Jazz Alliance

## WOODY HERMAN ORCHESTRA—A LANDMARK CONCERT FOR PAJA

If you’re like me and somewhat close to my age group, you cut your jazz teeth on the big bands of the 40’s, 50’s and 60’s—Goodman, Kenton, Basie, Ellington, and of course those great Woody Herman herds that featured some of the most important jazz musicians then and now: Stan Getz, Zoot Sims, Al Cohn, Pete and Conte Candoli, Red Norvo, Terry Gibbs, Chubby Jackson, Sal Nistico, Jeff Hamilton, Flip Phillips, Joe Lovano, et al. How often did you listen to those exciting layers of sound on Apple Honey, Caldonia, Northwest Passage, Bijou, Lemon Drop, Four Brothers, Opus de Funk, Early Autumn? We all have our own favorites—mine was Keen and Peachy.

Dr. Herb Wong, PAJA’s late co-founder, had a special connection to Woody Herman. In addition to Herb’s writing lots of liner notes for Herman albums, Woody and some band members wrote tunes dedicated to Herb, and the Herman Orchestra gave Herb and Marilyn a special present—they flew out and played at their wedding!

So when the keepers of the flame of the current Woody Herman ensemble suggested to Marilyn that they come to the Peninsula to play a special Herb Wong tribute concert, how could PAJA say no? The band—now spearheaded by former herd saxophonists Frank Tiberi (started with Woody in 1969!) and Mike Brignola (1980!)—will be composed of 15 Woody



The current Woody Herman Orchestra, playing at the Royal Opera House in Monte Carlo, Frank Tiberi on tenor.

Herman alumni, plus the band's current vocalist, playing those charts we all love so much.

As a special treat, three Menlo-Atherton HS jazz students (and their director) will be sitting in on the blues burner Woodchopper's Ball—a thrill and a fine learning experience for those youngsters.

The concert, as you probably know by now, is set for early Sunday evening, January 25, at Menlo-Atherton High School's Center for the Performing Arts, a beautiful 492-seat concert hall which opened just a couple of years ago. It's an easy drive from anywhere on the Peninsula, with easy access off 101 or El Camino Real in Menlo Park. (Explicit driving directions are printed on each ticket.) Tickets are \$40 general admission, \$35 to PAJA members, and \$15 to students. You can pick up your tickets at Peninsula Music & Repair (4333 El Camino in Palo Alto), The Record Man (1322 El Camino in Redwood City), Vinyl Solution in San Mateo (151 W. 25<sup>th</sup> Ave.), or Groove Yard in Oakland (5555 Claremont Ave.). Or order by mail (by January 18, and enclose SASE) from PAJA Tix, c/o Fox, 294 Tennessee Lane, Palo Alto 94306.

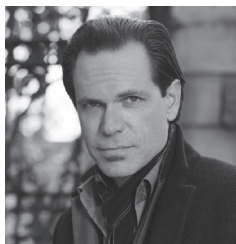
As you know, this big band concert posed a major financial and logistic challenge for PAJA, and you responded wonderfully to our special concert fundraising letter. Here's a heartfelt thank-you for your support and generosity. See you on the 25<sup>th</sup>! /Ed Fox

## HOPE FOR THE BEACH HOUSE?

In an e-blast following the last Bach Dancing and Dynamite Society concert of the year, Linda Goetz gives us a ray of hope for the survival of this treasured jazz venue, following the death of founder Pete Douglas. "Pete's daughters, Linda, Barbara, and Virginia, want everyone to know that they are working to secure the house for music. It's a complicated house, and it may be several months however before there is any news. Check the Bach website for updates and feel free to email [info@bachddsoc.org](mailto:info@bachddsoc.org) with your comments." So, let's keep our fingers crossed, folks, and don't hesitate to email Linda with your suggestions, ideas, donations?

## KURT ELLING, ON BEING A ROAD WARRIOR

"I did Europe-and-back five times from the beginning of the year [2013] until June 1. Japan, too. It got out of control. It doesn't affect my voice, but it wears me out. You're supposed to communicate this beautiful thing, and instead you're just trying not to fold. When I'm on the road, I tend to clam up, build a defense around myself to make it through the day, so when I get on stage I can give all my reserves to the audience and the band. After-



wards, you sign CDs until everybody's gone, you try to be professional and cool, make everybody happy. Then you go back to the hotel and you're alone again, and you've got to pull it together. It's not like you're Sinatra, with a valet who is going to press your suit." From 'You Can Feel When It Works,' a story on Kurt Elling by Ted Panken in *DownBeat*, December 2013.

## GYPSY JAZZ TERMINOLOGY

Gypsy Jazz, or Jazz Manouche, has had a resurgence in popularity in the U.S. One of PAJA's concerts a couple of years ago featured the Hot Club of San Francisco, a very popular group that performs widely in the Bay Area and around the country. There are also Hot Club ensembles in Las Vegas, Detroit, Philly, and "Cowtown." Here is a glossary of gypsy jazz terms taken from the informative jazz blog, [www.jazz.com](http://www.jazz.com)—an article by guitarist Bill Barnes—which may enhance your appreciation of the music.

**Gypsy Jazz** Genre of music evolved after American jazz came to Europe, created by Romani musicians living around Paris in the '30s, such as Django Reinhardt. Also called Hot Club swing, after Django's first jazz ensemble, le Quintette du Hot Club de France.

**Selmer** Parisian musical instrument company which produced Django Reinhardt's favorite guitar, originally designed for Selmer by Italian luthier Mario Maccaferri. Production of these guitars stopped in the early '50s.

**Grande Bouche** "Large mouth" in French. The original Selmer jazz guitar designed by Maccaferri, with a Large, D-shaped sound hole. This design is still preferred by rhythm players in jazz manouche ensembles.



Grande Bouche guitar

**Petite Bouche** "Small mouth." This is the Selmer acoustic guitar preferred by Django, featuring a small oval-shaped sound hole for more intense solo projection. Only about 1000 were ever built.

**La Pompe** The rhythm technique used by Gypsy guitarists in Hot Club swing music. In English, it means the pump, a prominent pulse that allows one or two guitars to take the place of drums and keyboard in a traditional Hot Club group.

**Wegen** Special handcrafted guitar pick made by Dutch artisan Michael Wegen. This plectrum, made from synthetic material resembling natural tortoise shell, is universally preferred by Gypsy Jazz guitarists.

## LEE KONITZ AND STAN KENTON

"In 1952 Lee Konitz joined the Stan Kenton Orchestra as it focused more on swinging, brassier arrangements. 'I

# THE JAZZ PERISCOPE

Selected gigs for January & February

## YOSHI'S SAN FRANCISCO *www.theaddition.com* (new name: The Addition)

- 1/20, 2/3, 2/10, 2/24 Tommie Igoe Groove Conspiracy . . . . . 8pm
- 1/23 Bobby Hutcherson . . . . . 8,10pm
- 2/22 Holly Hoffman (w/ Clayton, Hamilton, Wilson) 3pm

## YOSHI'S OAKLAND *www.yoshis.com/oakland*

- 1/9-11, 13, 14 Tower of Power
- 1/27-28 Bill Frisell . . . . . 8,10pm
- 2/16 Michael O'Neil, Kenny Washington CD release . . . . . 8pm

## SF JAZZ CENTER *www.sfjazz.org/center*

- 1/8-11 Pharaoh Sanders . . . . . 7:30pm
- 1/14 Gregory Porter . . . . . 7, 9:30pm
- 1/17 Marcus Roberts . . . . . 7:30pm
- 1/18 McCoy Tyner Trio, w/Kenny Barron . . . . . 4, 7pm
- 1/22-25 Chris Botti . . . . . 7:30pm
- 1/29 TEJ Trio (Eigsti, Harland, Lage) . . . . . 7:30pm
- 2/13 Mary Stallings, with Eric Reed Trio . . . . . 7:30pm
- 2/14 Mosaic (Carrington, Jensen, Fuller, etc) . . . . . 7, 9:30pm
- 2/18 Scott Hamilton Quintet, w/Harry Allen . . . . . 7:30pm
- 2/21-22 Kurt Elling

## BACH'S DANCING & DYNAMITE SOCIETY, EL GRANADA *www.bachddsoc.org*

### KUUMBWA JAZZ CENTER, SANTA CRUZ *www.kuumbwajazz.org*

- 1/22 Smith Dobson Quartet . . . . . 7pm
- 2/2 Eric Harland Voyager (w/Eigsti, Lage, etc.) . . . . . 7pm
- 2/5 Melissa Aldana . . . . . 7pm
- 2/9 Billy Childs Quartet . . . . . 7pm
- 2/16 Nicholas Payton Trio . . . . . 7pm
- 2/20 Christian McBride Trio . . . . . 7, 9 pm
- 2/23 Kurt Elling . . . . . 7, 9 pm

### SAN JOSE JAZZ *www.sanjosejazz.org*

#### ANGELICAS 863 Main St., Redwood City *www.angelicasllc.com*

Every Tuesday evening Jazz on Tuesdays Trio + vocalists 7:15pm\*  
 Kay Kostopoulos on 1/27

- 1/8 Noel Jewkes Quartet . . . . . 7:30pm
- 1/11, 2/8 Mike Galisatus Big Band . . . . . 7pm
- 1/30 Pete Escovedo Latin All-Stars . . . . . 8:30pm

#### CAFÉ STRITCH 374 S. 1st St., San Jose *www.cafestritch.com*

#### HOTEL SOFITEL 223 Twin Dolphin Dr., Redwood City 650/598-9000

Wednesday evening jazz, with Michael O'Neill and vocalists 6-9pm



Melissa Aldana

loved hearing Stan's band while growing up in Chicago. When I joined, some guys thought I had sold out, but I needed the money to raise my family. I still have ringing in my left ear from that trumpet section." Marc Myers in the *Wall Street Journal*.

## YOUR GENEROSITY IS MUCH APPRECIATED

A big THANK YOU to all those who made contributions to PAJA during 2014. You have made it possible

for us to continue supporting jazz education on the Peninsula. In the past couple of years, your donations have helped us buy a drum kit for the Community School of Music and the Arts in Mountain View, make grants to the Stanford Jazz Workshop scholarship fund, to radio station KCSM, to the Gunn High School string orchestra, and to the San Mateo Union HS District (to fund the all-star jazz orchestra director), among others. Many of you also made generous contributions to help underwrite our Woody Herman Orchestra concert. Those donors will be listed in the concert program.

### PAJA CONTRIBUTORS

Patty Boyle, Menlo Park  
 Ned Chapin, Menlo Park  
 Martha Chickering, Palo Alto  
 Lew Creary, San Jose  
 Claire Dikas, Redwood City  
 Shirley Douglas, Palo Alto (memory of Neville Holt)  
 Cosette & Malcolm Dudley, Atherton  
 Beryl Gaidos, Danville  
 Dent Hand, Incline Village, NV  
 Anne Hessing, Palo Alto  
 L. Bruce Hopewell, Napa  
 Max & Lori Jedda, Sunnyvale  
 Jay & Claire Jernick, Portola Valley  
 Robert Johnstone, Palo Alto  
 Judith Kays, Stanford  
 K. Knox, Santa Clara  
 Bob & Christine Kradjian, Hillsborough  
 Hollis Lenderking, La Honda  
 Rich & Beverly Marconi, Los Altos  
 Kent Mather, Palo Alto  
 Bob Murphy, Portola Valley  
 Sam Pearl, Palo Alto  
 Bruce Powell & Jan De Carli, Cupertino  
 Bonnie Rattner, San Mateo

Louise Rising, Palo Alto  
 Karl & Theresa Robinson, Saratoga  
 Lily Robinson, Los Altos  
 Justin Rockwell, San Diego  
 Roberta Roth & Bill Newell, Redwood City  
 Steven Russell, Redwood City  
 Eugene & Nancy Sharp, Palo Alto  
 Jay Siegel & Linda Carr, Menlo Park  
 Andrea Smith, Palo Alto  
 Jeffrey & Sueann Stone, Menlo Park  
 John Sylvester, Palo Alto  
 Jeff Thompson, Milpitas  
 Terry Tran & Alice Nguyen, San Carlos  
 Bill Whitmer, Palo Alto  
 Gayla & Walt Wood, Los Altos Hills

And a special thanks to  
 Mercy & Roger Smullen Fund

### DONORS TO THE HERB WONG SCHOLARSHIP FUND

Jo Ann Arneson, Belmont  
 Jane Benson, Menlo Park  
 Francine Bellson  
 Patty Boyle, Menlo Park

Joan Dominoco  
 Nancy Eigsti, Menlo Park  
 Beryl Gaidos, Danville  
 Lezlie Glare, Menlo Park  
 Harvey & Patti Gould  
 Don & Robin Graham, Los Angeles  
 Mary Hand, Palo Alto  
 Gale Henshel, Palo Alto  
 Anne Hessing, Palo Alto  
 Kip & Jay Hudson, Monterey  
 Matthew P. Jacob, Redwood City  
 Donna, Matt, Evan & Isabelle James, Portola Vly  
 Monte & Jan Klein, Portola Valley  
 David Kohler, Palo Alto  
 Sally Letchworth, Piedmont  
 Richard & Jean Lym, San Francisco  
 Merele McClure, Palo Alto  
 Andy & Dorothy Nozaka, Saratoga  
 Sam Pearl, Palo Alto  
 Pat Purcell, Menlo Park  
 Marjorie Quon  
 Dianne Reeves, Englishtown, NJ  
 Geoff Roach, Foster City  
 Karl & Theresa Robinson, Saratoga  
 B.J. Sorensen, Portola Valley  
 John & Joanne Wong, Fremont

**Jazz**  
 Palo Alto  
 Alliance

**Join PAJA**

Mail your check to Palo Alto Jazz Alliance  
 P.O. Box 60397 • Palo Alto, CA 94306

Name \_\_\_\_\_

Address \_\_\_\_\_

City, State, Zip \_\_\_\_\_

New subscriber  Renewal  This is a change of address

Annual dues, \$35 for individuals \$ \_\_\_\_\_

Annual dues, \$50 family (two persons) \_\_\_\_\_

Additional contribution to support jazz education \_\_\_\_\_

Total enclosed \$ \_\_\_\_\_